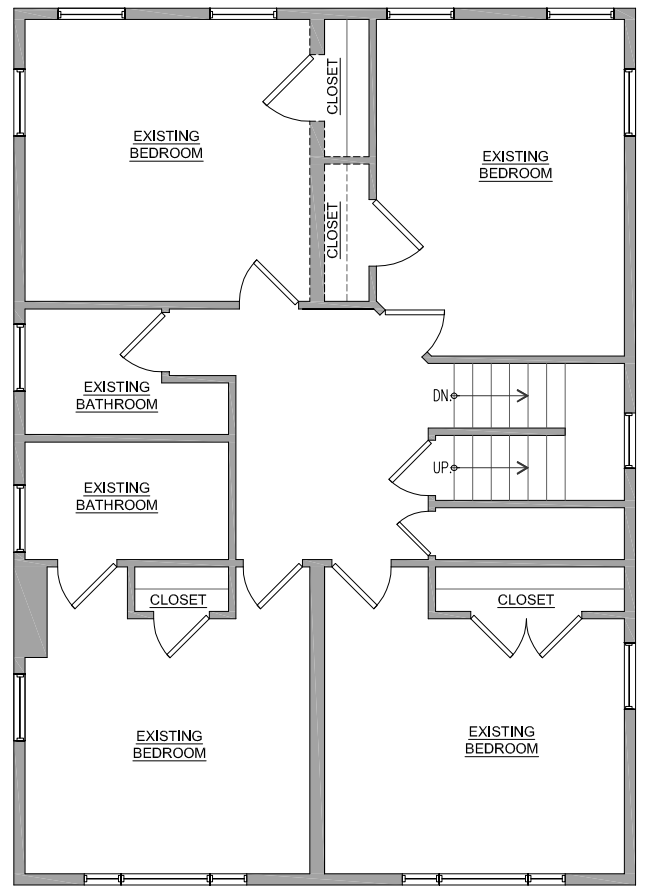
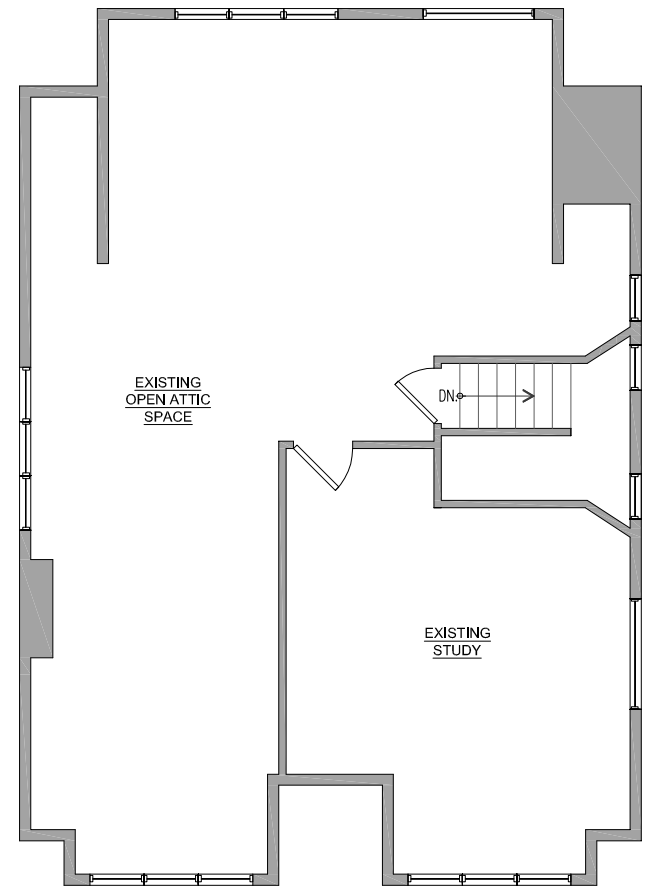


EXISTING 1ST FLOOR PLAN 1/4"=1'-0" 1



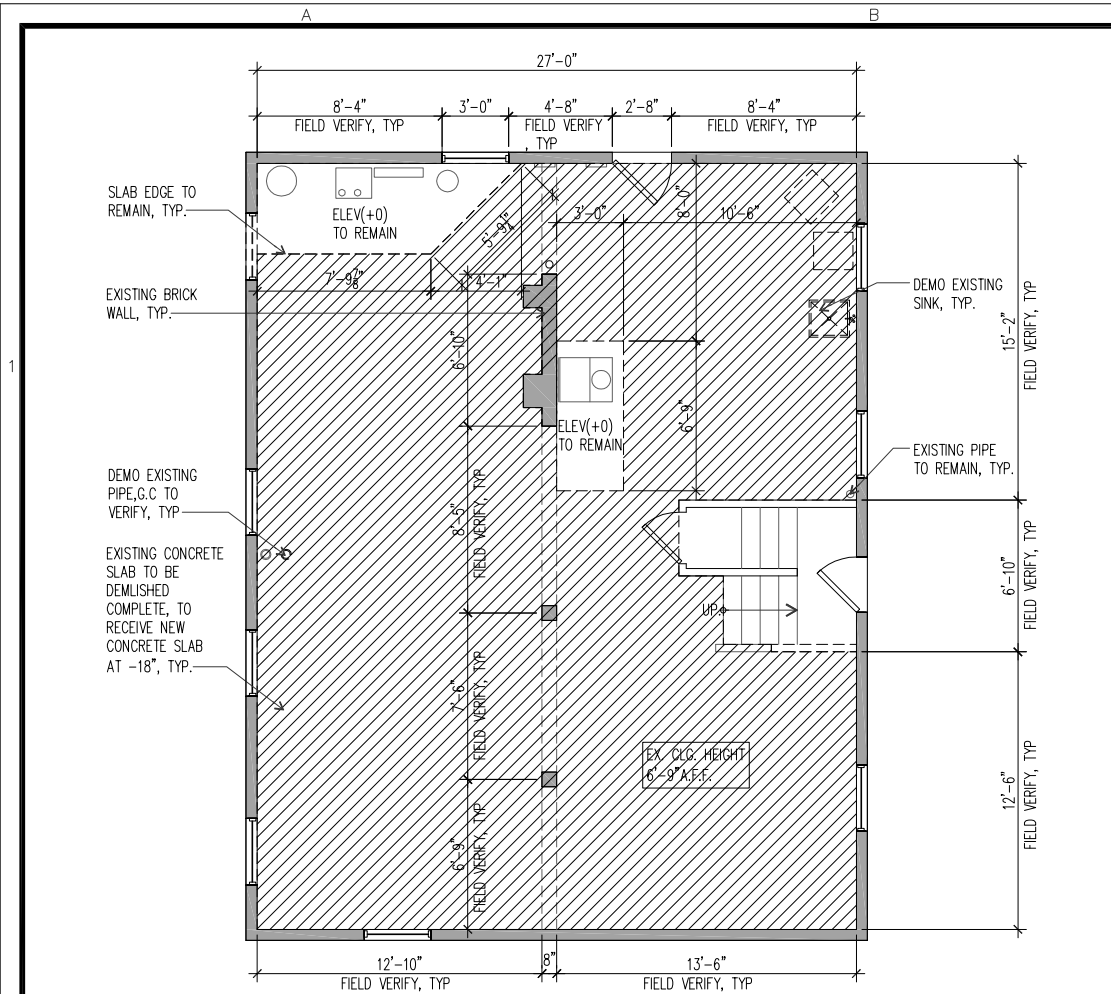
EXISTING 2ND FLOOR PLAN 1/4"=1'-0" 2



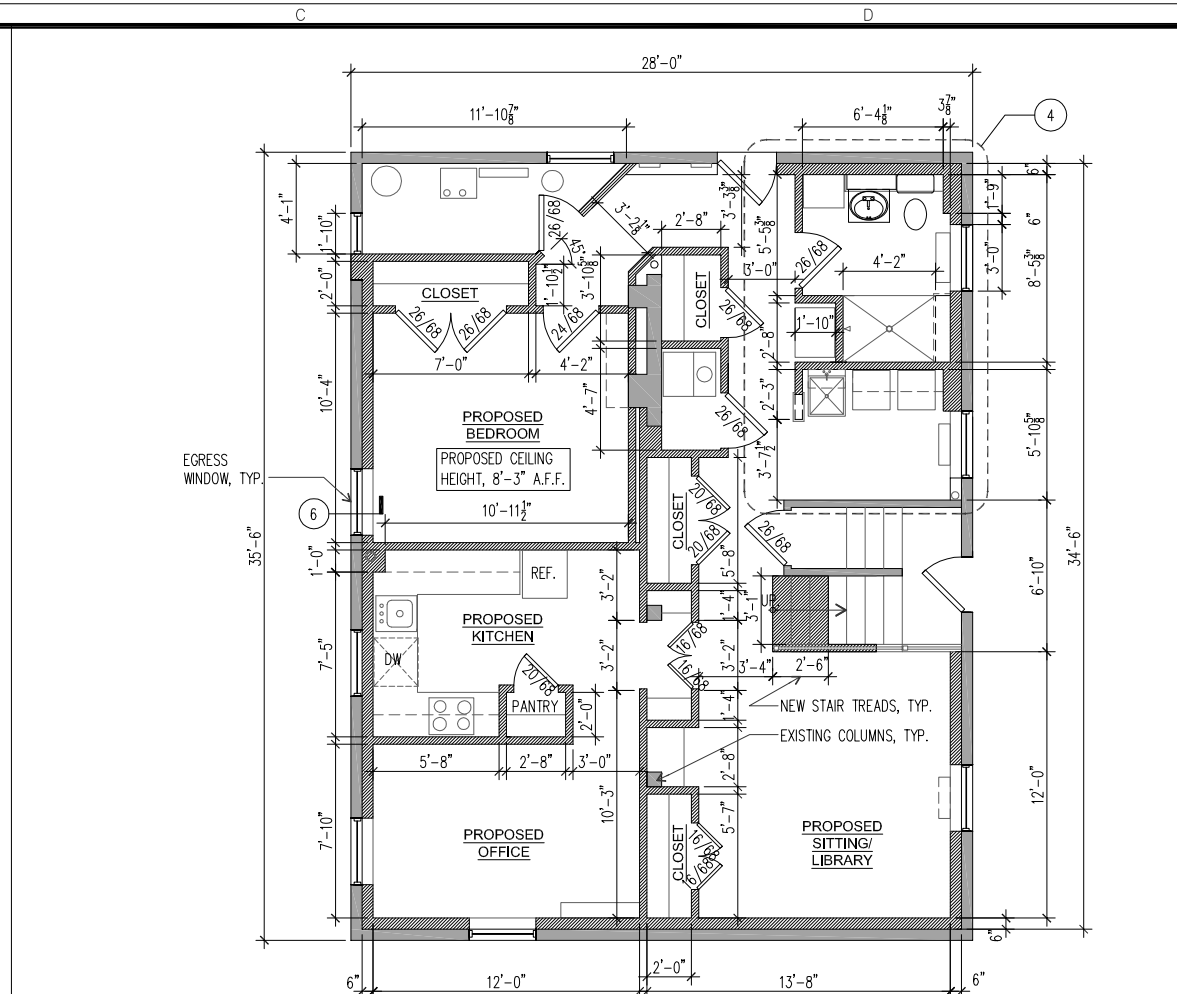
EXISTING ATTIC FLOOR PLAN 1/4"=1'-0" 3

LEGEND :

- EX. WALL TO REMAIN, TYP.
- NEW WALL, TYP.

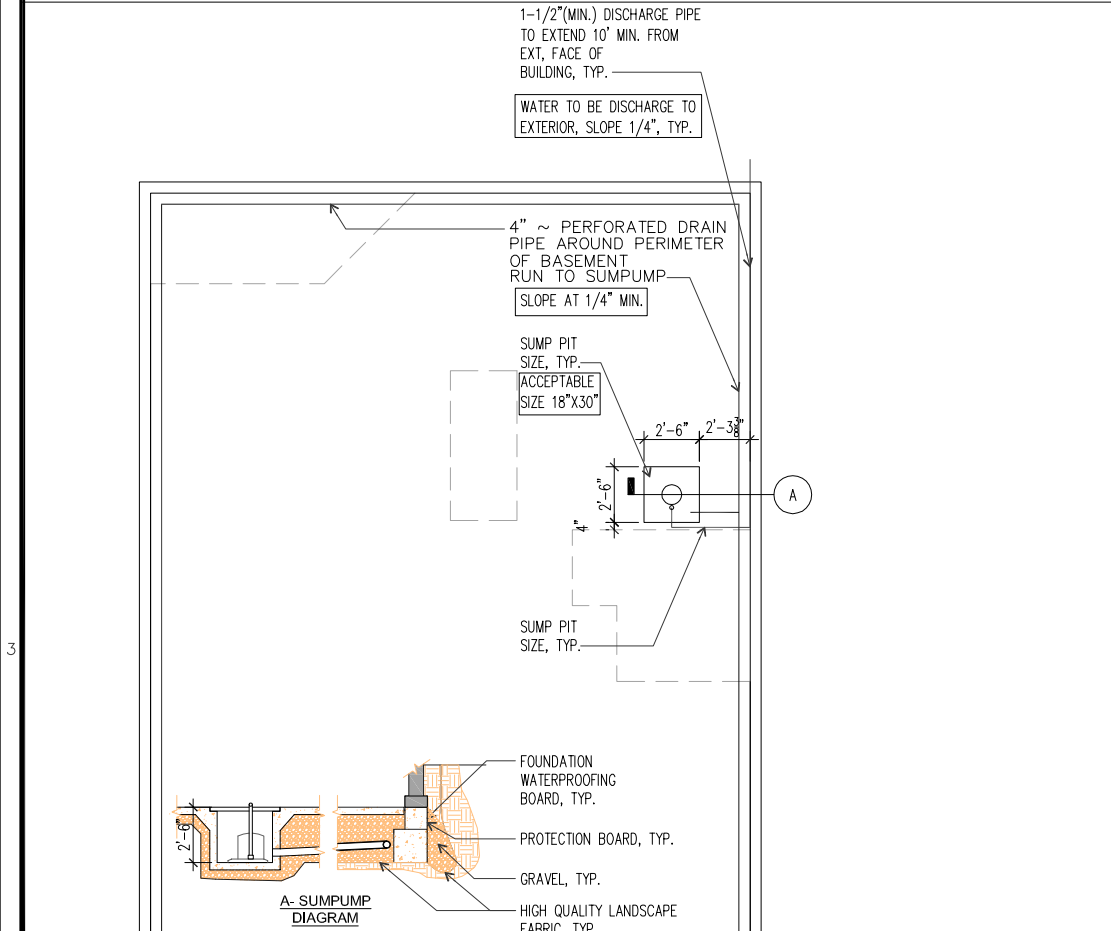


1 DEMO FLOOR PLAN 1/4"=1'-0" 1

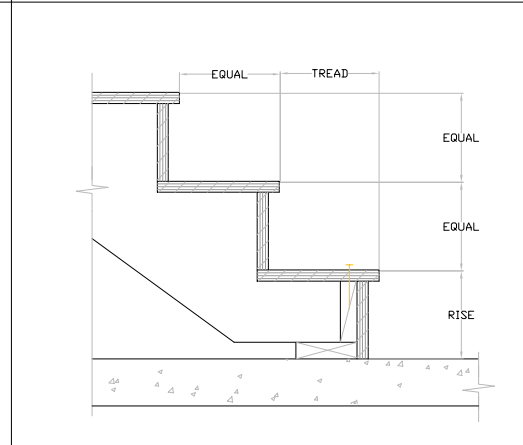


2 PROPOSED FLOOR PLAN 1/4"=1'-0" 2

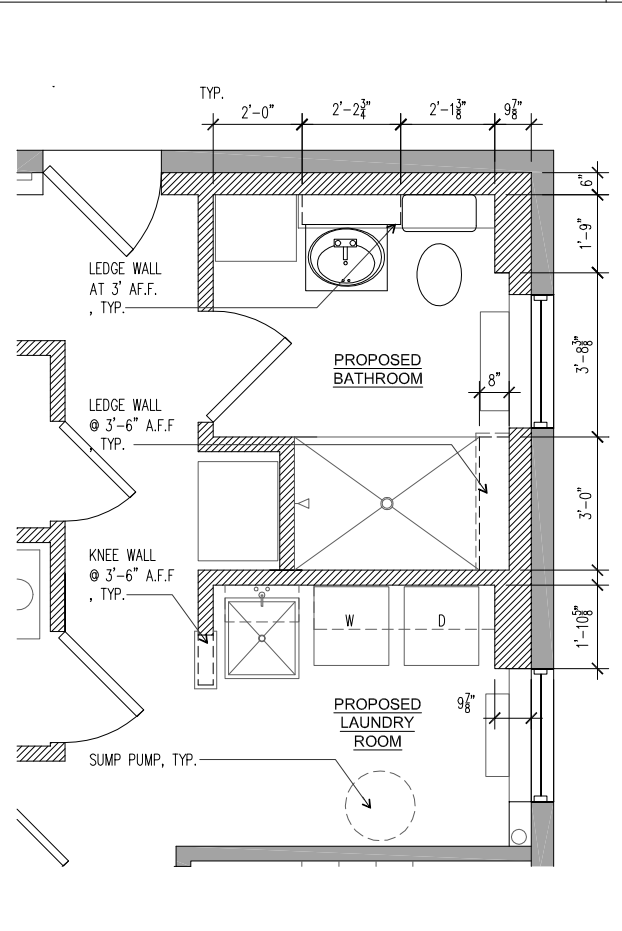
- LEGEND :**
- EX. WALL TO REMAIN, TYP.
 - NEW WALL, TYP.
- GENERAL NOTES**
- VERIFY ALL LOCAL CODES, ENERGY TYPES, AND SITE CONDITIONS PRIOR TO CONSTRUCTION.
 - ALL DIMENSIONS ARE FROM FACE OF STUD TO FACE OF STUD UNLESS NOTED OTHERWISE.
 - CONTRACTOR SHALL COORDINATE ALL CLOSET SHELVING REQUIREMENTS.
 - DO NOT SCALE DRAWINGS, FOLLOW DIMENSIONS ONLY.
 - CONTRACTOR SHALL FIELD VERIFY ALL CABINET DIMENSIONS BEFORE FABRICATION.
 - BEDROOM WINDOWS SHALL HAVE A MINIMUM NET CLEAR OPENING OF 5.7 SQ.FT., A MINIMUM NET CLEAR OPENABLE WIDTH OF 20", A MINIMUM NET CLEAR OPENABLE HEIGHT OF 24" AND HAVE A MAXIMUM FINISH SILL HEIGHT OF 43" FROM FINISH FLOOR.
 - ALL GLASS LOCATED WITHIN 18" OF FLOOR, 12" OF A DOOR OR LOCATED WITHIN 60" OF FLOOR AT BATHTUBS, WHIRLPOOLS, SHOWERS, SAUNAS, STEAM ROOMS OR HOT TUBS SHALL BE TEMPERED.
 - ALL EXPOSED INSULATION SHALL HAVE A FLAME SPREAD RATING OF LESS THAN 25 AND A SMOKE DENSITY RATING OF LESS THAN 450.
 - PROVIDE COMBUSTION AIR VENTS WITH SCREEN AND BACK DAMPER, FOR FIREPLACES, WOOD STOVES AND ANY APPLIANCE WITH AN OPEN FLAME.
 - BATHROOMS AND UTILITY ROOMS SHALL BE VENTED TO THE OUTSIDE WITH A MINIMUM OF A 90 CFM FAN. RANGE HOODS SHALL ALSO BE VENTED TO OUTSIDE.
 - ALL INTERIOR WALLS SHALL BE COVERED WITH 1/2" GYPSUM BOARD, WITH METAL CORNER REINFORCING TAPE FLOAT AND SAND. (3 COATS) USE 5/8" GYPSUM BOARD ON CEILINGS WHEN SUPPORTING MEMBERS ARE 24" O.C. OR GREATER. USE 1/2" GYPSUM BOARD ON CEILING MEMBERS LESS THAN 24" O.C.
 - ALL BATH AND TOILET AREA WALLS AND CEILINGS SHALL HAVE WATER RESISTANT GYPSUM BOARD.
 - PROVIDE DOORBELLS, TRANSFORMER, AND CHIME.
 - PROVIDE SMOKE DETECTORS AS REQUIRED BY CODE.



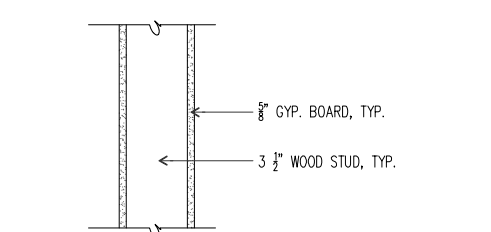
3 SUMP PUMP 1/4"=1'-0" 7



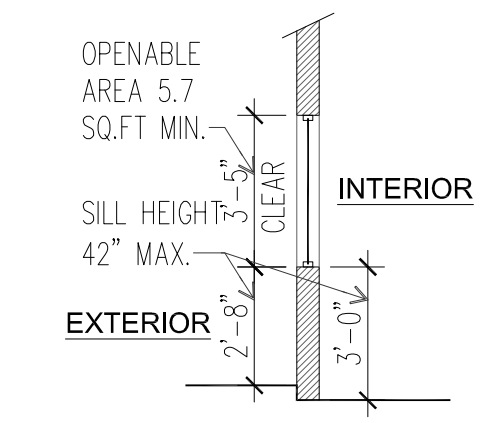
4 WOOD STAIRS @ CONC. SLAB 1/2"=1'-0" 3



5 SECTION AT EGRESS WINDOW, TYP. 1/2"=1'-0" 6



6 TYP. PARTITION 1 1/2"=1'-0" 5



7 SECTION AT EGRESS WINDOW, TYP. 1/2"=1'-0" 6



A

B

C

D

E

 TOP OF RETAINING WALL
 FINISH GRADE

6"

 CENTER LINE OF WEEP HOLES

10"

1'-0" MIN.

4" 1'-4" 4"

6" FOOTING DRAIN, RUN TO DAYLIGHT, TYP

 TOP OF RETAINING WALL

CONCRETE RETAINING, TYP.

4'-9"

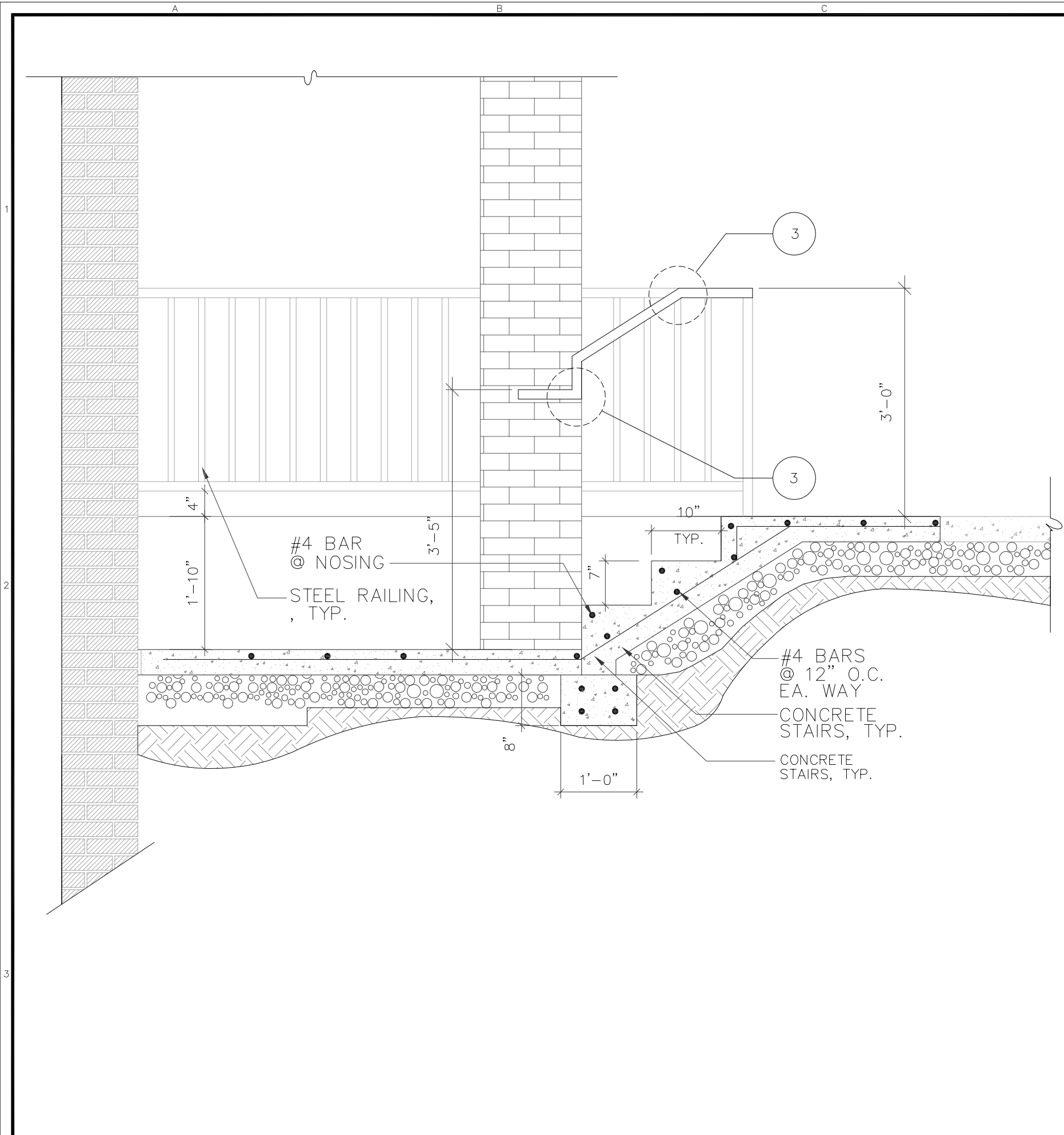
NEW CONCRETE RETAINING WALL, TYP. G.C TO COORDINATE DEPTH OF EX. FOUNDATION.

6x6 10 / 10 WOVEN WIRE MESH, TYP.

4" CONCRETE SLAB, TYP. PROPOSED FINISH FLOOR

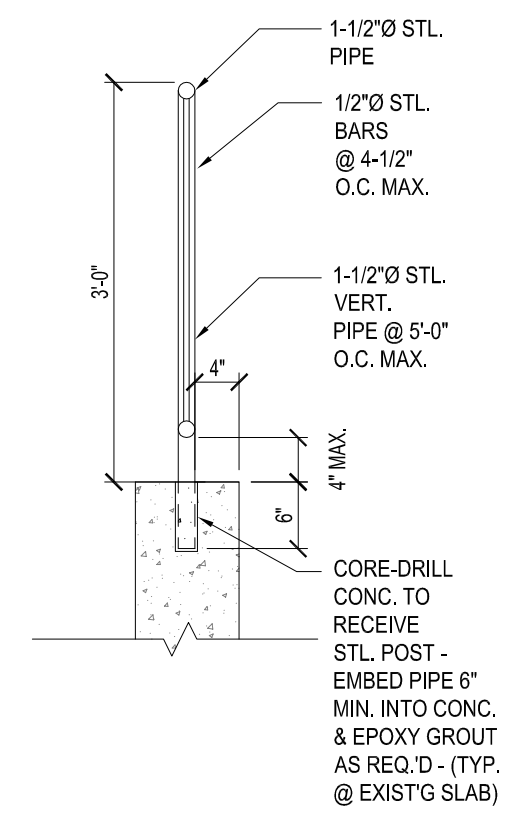


TYPICAL SECTION AT CONCRETE WALL



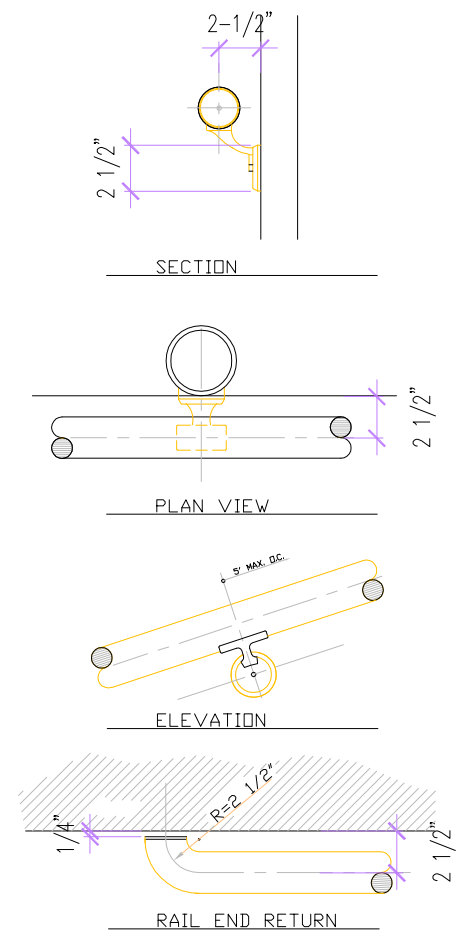
TYPICAL SECTION AT PATIO STAIRS

1 1/2"=1'-0" 1



TYP. SECTION @ RAIL ATTACHMENT

1 1/2"=1'-0" 2



TYP. RAILING DETAILS

1 1/2"=1'-0" 3

A

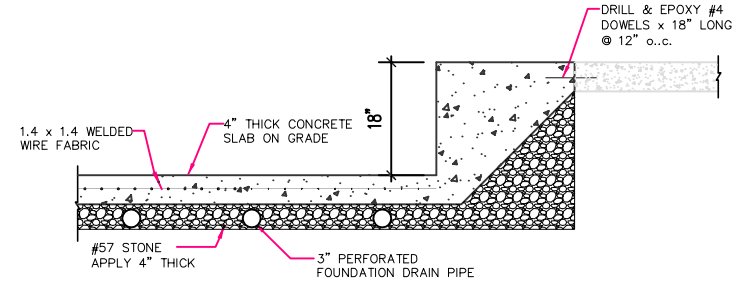
B

C

D

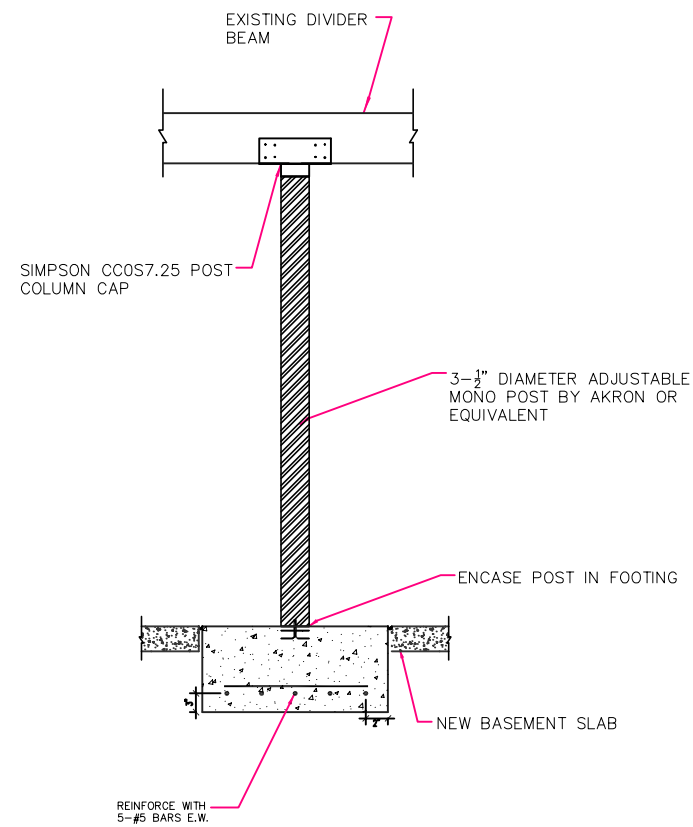
E

1

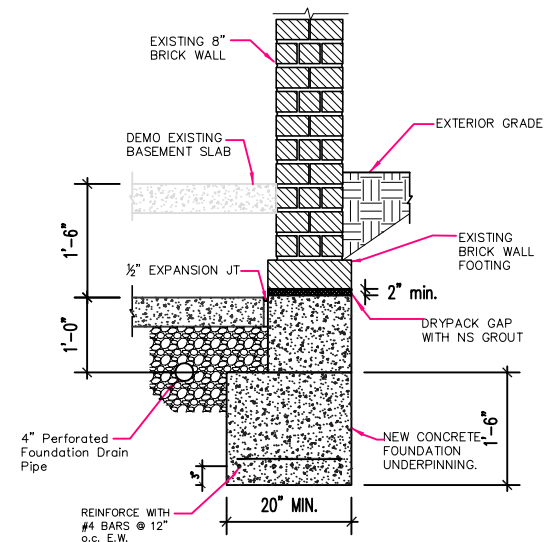


01 DETAIL AT NEW SLAB ON GRADE TIE INTO EXISTING

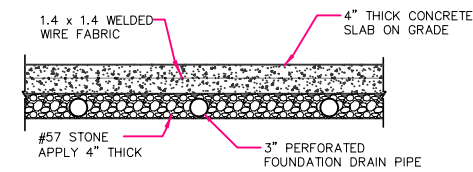
02 NOT USED



03 COLUMN AND FOOTING



04 DETAIL AT EXTERIOR WALL



05 SLAB ON GRADE DETAIL

06 NOT USED

PLAN DETAILS

SCALE: 3/8" = 1'-0"

2

3

A**D** Studio
esign
rchitectural, l.l.c.

T 571-294-4200 **E** edarch2009@gmail.com **A** 6108 Cloud Drive Springfield, VA 22150